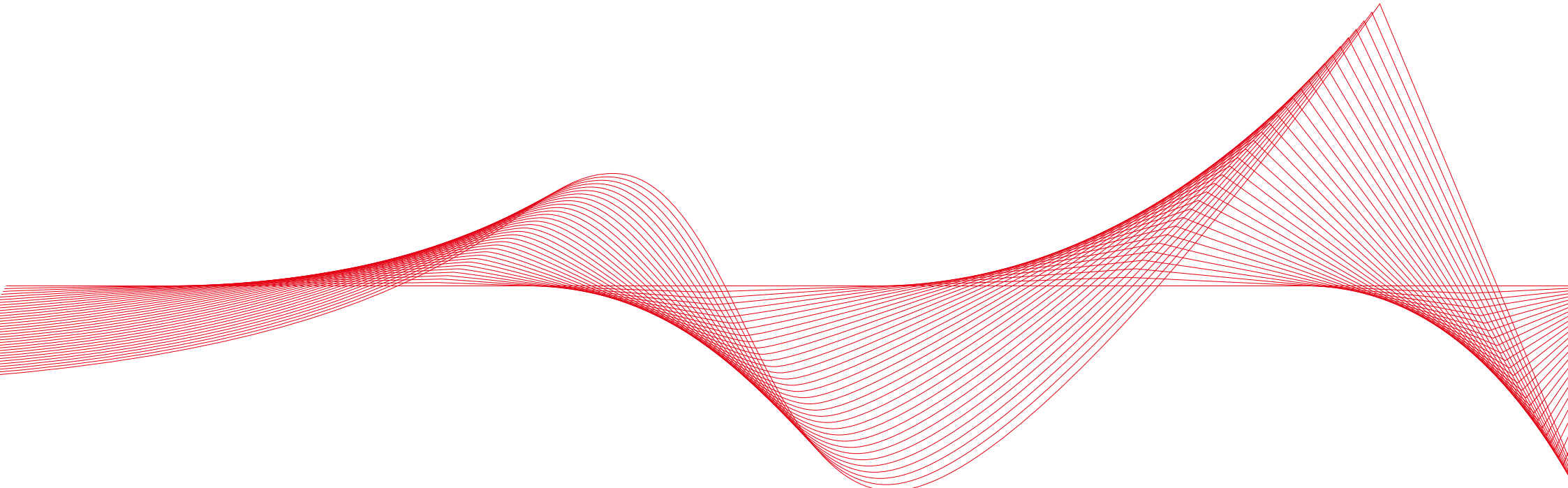


# M/C63<sub>P</sub>

MULTIHULL



## INTRODUCTION

---

McConaghy Multihulls is the latest product range from McConaghy, drawing on our 50 years' of yacht building excellence, as well as a storied history in creating some of the world's best-known and best performing race boats.

Our continual innovation and investment in new materials and technologies, has allowed us to firmly establish our position at the forefront of progressive high-performance yacht building.

McConaghy is proud to now introduce an entire line of cruising multihulls to our portfolio, created in collaboration with world-leading designers.

The MC52, MC55, MC59p, MC60, MC63p, MC68, MC77 and MC90 each feature clean lines, apartment-style living and overall, an open and modern dynamic that simultaneously enables more comfortable cruising and better performance; a feat not yet achieved in any other line of multihull.

The MC63p is our flagship power model and utilises highly optimised hull forms combined with the already iconic lines of the McConaghy MC60. This strong, light and powerful motor yacht is the first among its peers to offer both coastal cruising and the capability for far-flung oceanic adventures.







## MEET THE NEXT GENERATION POWERCAT

---

Lightweight, strong and with contemporary, progressive lines, the MC63p is the power cat of the modern era.

McConaghy's carefully considered use of carbon and precise hull forms and fixed foils makes for a particularly fuel-efficient vessel at her 20-knot cruising speed, yet the MC63p is able to achieve top speed of 36knots and offers a range of 1,500 nautical miles.

The MC63p offers two flybridge layouts to choose from, catering to a number of different usage models. The aft flybridge option allows for a bank of seating behind the helm with a sun pad recessed into the coach roof, whilst the extended flybridge option creates a larger social space for relaxing or toy stowage, with the addition of a bridge atop the coach roof.

There are three versatile interior arrangements available, allowing for a three or four cabin layout or an arrangement that positions the master suite on the main deck. Twin bunk cabins forward allow for the accomodation of crew and McConaghy welcome a client to specify their own cabin configuration.

Retractable glass panels flank the open-plan saloon and galley, and full height bi-fold glass doors connect this dynamic social space to the aft deck. On the port side, a spiral staircase leads up to the flybridge.

Interior styling comes from Design Unlimited, an award-winning studio with extensive experience in both large custom yachts and the production sector. Their attention to details and innovative storage solutions that allow for living space to be maximised, make the MC63p a mini-superyacht, with luxury and performance ability perfectly partnered.

The MC63p carries her tender on an aft cradle, deployed and recovered by a hydraulic lift system. A tender or water toys can also be stowed on the foredeck.





## GENERAL SPECIFICATION

---

LOA	.....	19M
MAX BEAM	.....	8.56M
DRAFT	.....	1.4M
STANDARD POWER	.....	2 X SCANIA 875HP
FUEL TANKS CAPACITY	.....	8000L
FRESH WATER CAPACITY	.....	1500L
HEADROOM SALOON	.....	2.00M - 2.30M
HEADROOM HULLS	.....	2.00M - 2.30M
DESIGNER	.....	KER YACHT DESIGN
BUILDER	.....	MCGONAGHY BOATS
CERTIFICATE	.....	CE-CATEGORY A-OCEAN
STRUCTURE	.....	BUREAU VERITAS



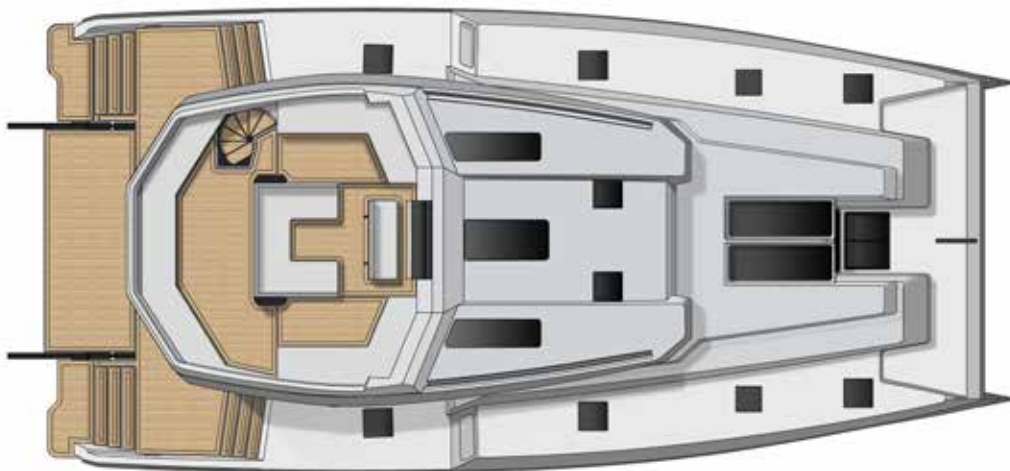
### CONSTRUCTION

Constructed using a controlled epoxy vacuum infusion process and pressed panels of E-glass, and Corecell for lightweight strength and rigidity.

### EXTERIOR FINISH

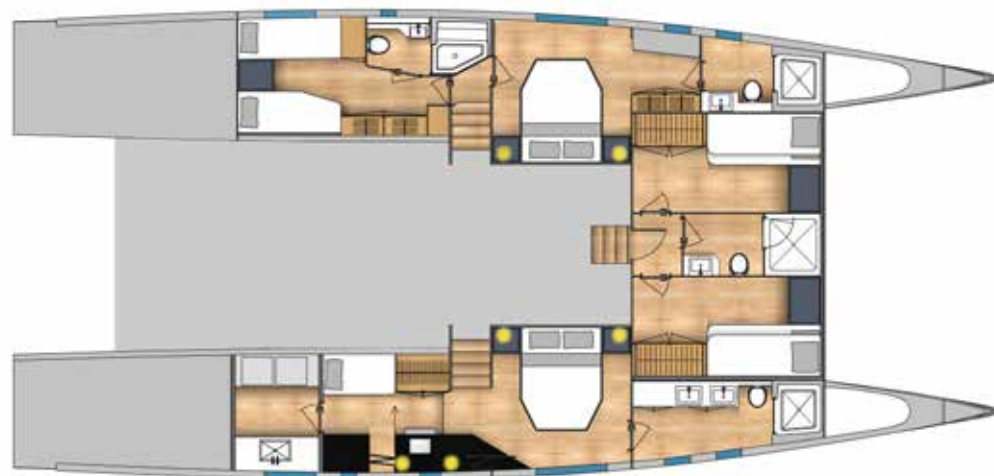
- Hull and deck painted in high quality two pack polyurethane coating in white as standard
- Non-skid areas on the side decks
- All hatches drain to waterline
- Six folding cleats
- Boat's name and country/port of registration painted on stern
- Below waterline surfaces finished with epoxy primer

## BASE BOAT: MAIN DECK SALOON WITH 5 CABIN ARRANGEMENT



MAIN DECK & FLYBRIDGE

5 CABIN LAYOUT



\*INDICATIVE LAYOUT OF CUSTOM INTERIOR – OTHER OPTIONS AVAILABLE



## BASE BOAT INCLUDES - MAIN DECK

---

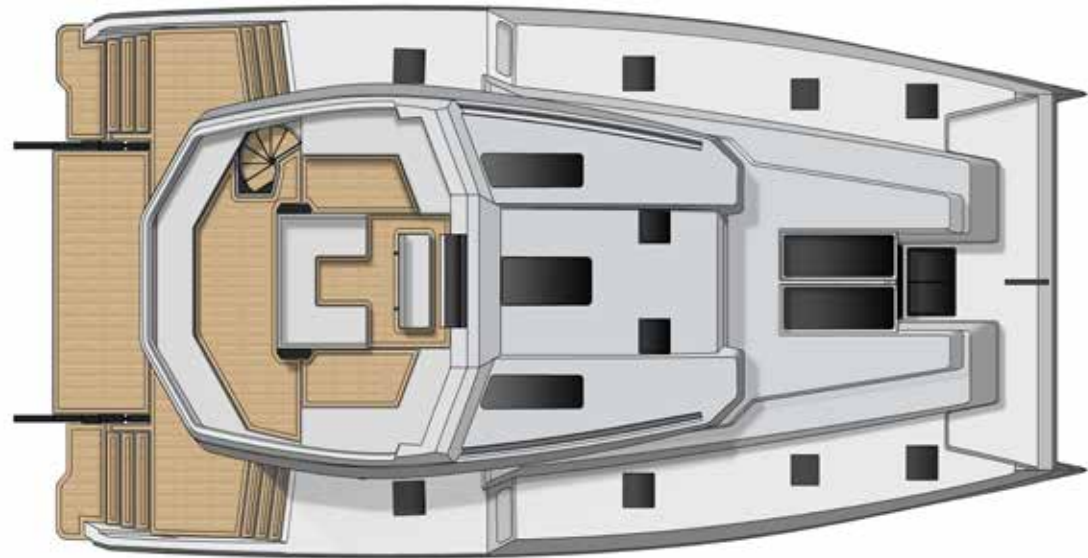
### AFT MAIN DECK

- Frameless, bi-folding, tempered safety glass doors between saloon and aft deck
- Clear carbon stairs and handrails to fly bridge with illuminated steps
- Transom steps, port and starboard with discreet lighting
- Port side overhead rain shower recessed into flybridge structure, hot/cold mixer tap

Telescopic swim ladder discretely housed in the transom

### CENTRAL FLYBRIDGE

- Single built in helm station with good visibility
- McConaghy custom carbon fibre steering wheel
- Five courtesy lights
- Wrap-around seating



## BASE BOAT INCLUDES - MAIN DECK

---

### SALOON TO STARBOARD

- Electric sliding main saloon windows
- L-shaped settees with bench seats, cushions
- Manual lifting dining table (not foldable)
- Corner settee adjacent to Nav Station
- Under seating storage
- Stairs to hull
- Choice of headliners
- Choice of laminated soles
- Overhead recessed lights and down lights

### LOWER FWD CABIN

- Lower Fwd Cabin located mid ship forward

### NAVIGATION STATION FORWARD

- Hand embroidered pivoting helm seat at the nav station
- Navigation and electronics panel
- Clear carbon finish, customised layout
- USB sockets

### PORT SIDE GALLEY AND THE ISLAND

- Electric sliding saloon windows
- Skylights
- Expansive Corian counter tops
- Twin stainless steel sinks
- Mixer tap hot/cold
- Electric stove and oven
- Stainless steel Isotherm 160L draw fridge
- Stainless steel Isotherm 160L draw freezer
- Storage under bench tops, cupboards & soft close draws
- In-built garbage bin



## BASE BOAT INCLUDES - INTERIOR ACCOMMODATION

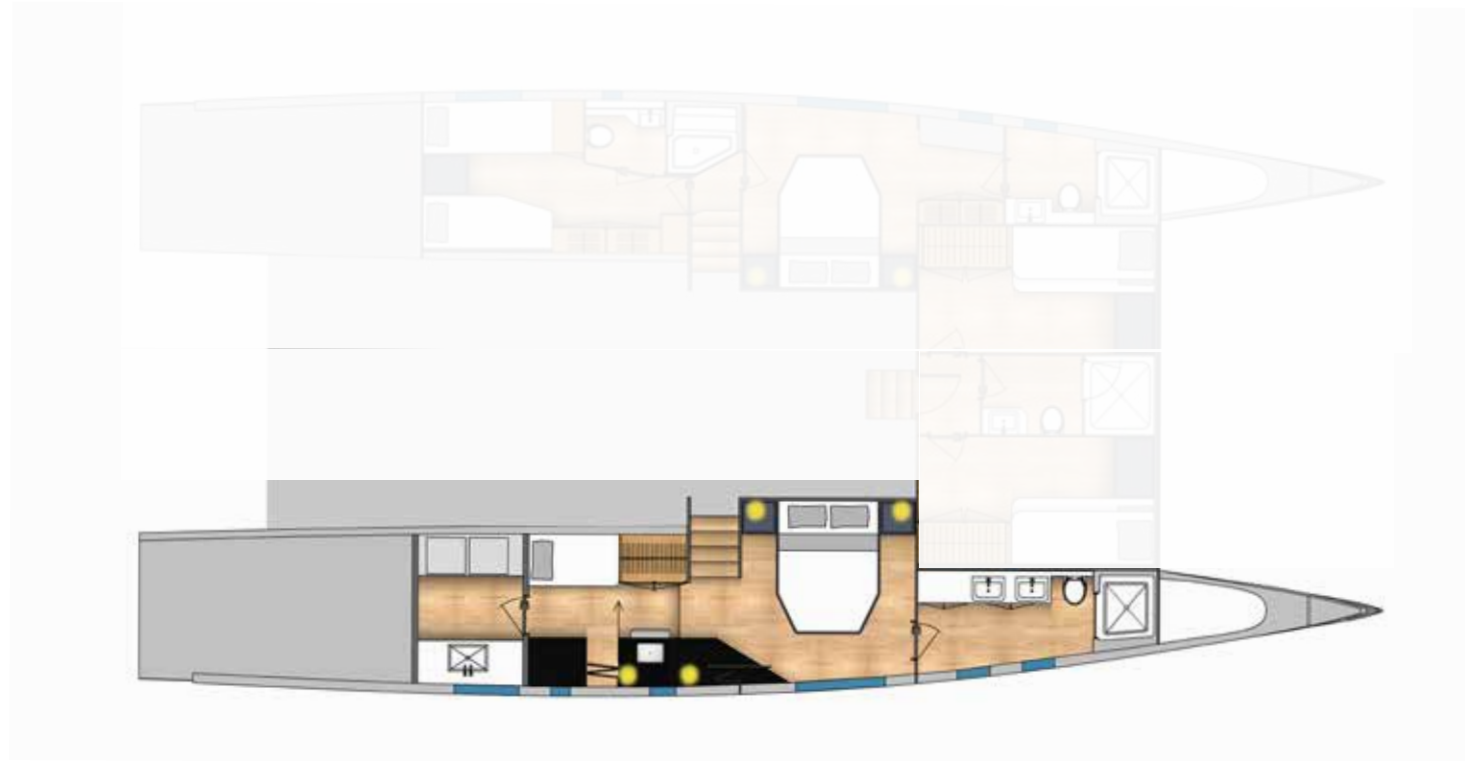
### STARBOARD HULL - OWNER'S STATEROOM

#### FORWARD HEAD, SHOWER & DRESSING ROOM

- Large shower with quality fittings, corian sole and inboard hatch
- Sink with cabinet and hot/cold mixer tap
- Electric toilet
- Hanging locker
- Full length mirror
- Seaward facing side windows
- Overhead down lights

#### OWNER CABIN

- Double berth with ample storage
- Overhead down lights
- Reading lights and lamps
- Laminated sole
- Hull and Headliners
- Single bunk for child
- Laundry room with sink





## BASE BOAT INCLUDES - INTERIOR ACCOMMODATION

### PORT HULL - TWO GUEST CABINS

#### FORWARD HEAD, SHOWER & DRESSING ROOM

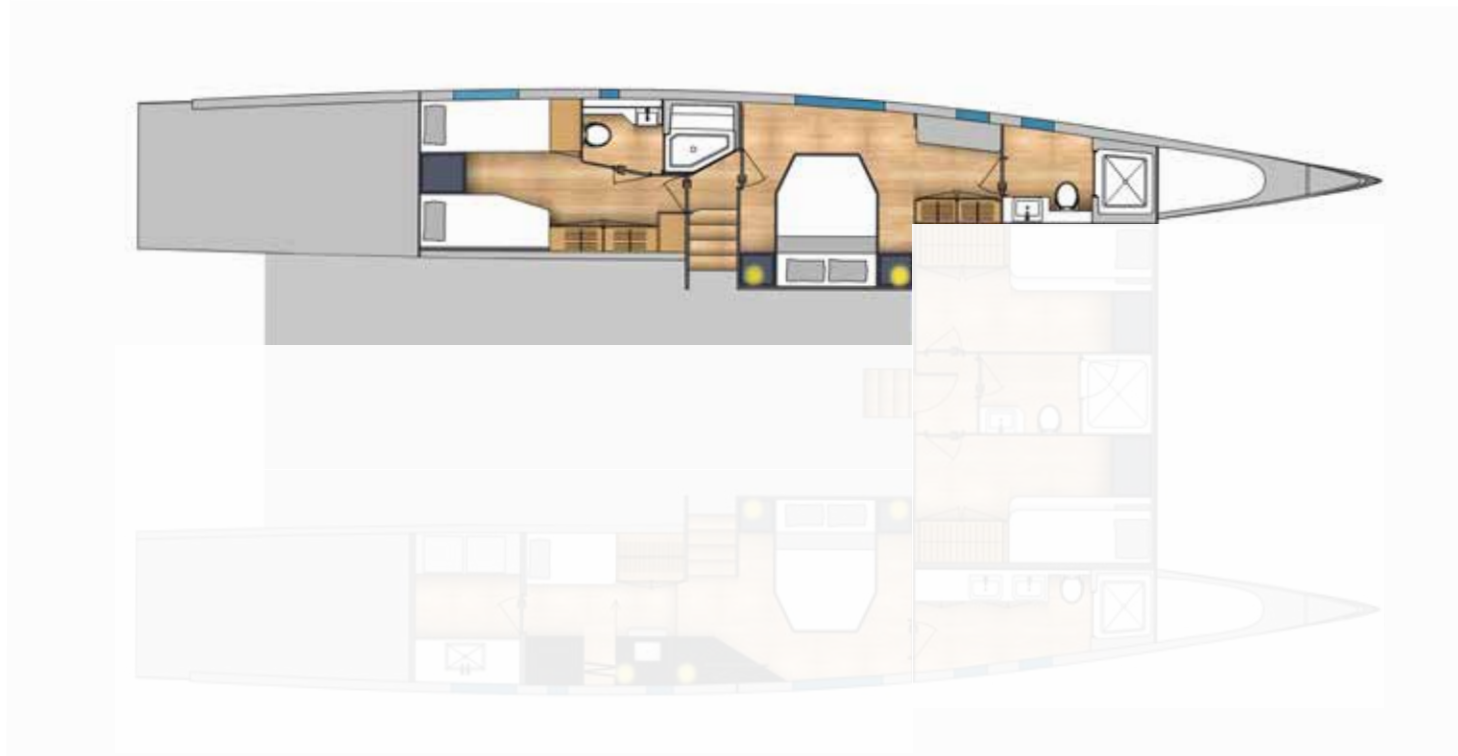
- Large shower with quality fittings, corian sole and inboard hatch
- Sink with cabinet and hot/cold mixer tap
- Electric toilet
- Hanging locker
- Full length mirror
- Bench seat
- Seaward facing side windows
- Overhead hatch
- Overhead down lights

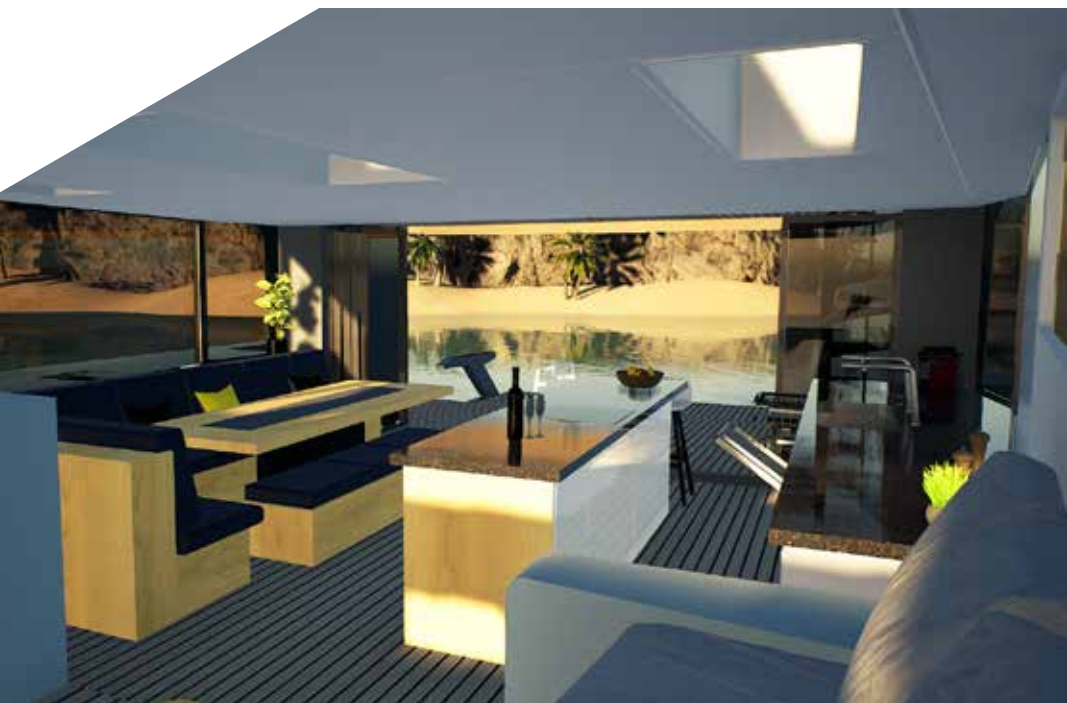
#### AFT GUEST CABIN, HEAD & SHOWER

- Twin single berths
- Ample storage underneath
- Reading lights and lamps
- Overhead hatch
- Laminated sole
- Hull and headliners
- Large shower with quality fittings
- Sink with cabinet and hot/cold mixer tap
- Full length mirror
- Electric toilet
- Overhead down lights
- One USB socket next to bedding

#### MIDSHIP GUEST CABIN

- Underdeck seaward facing double berth
- Panoramic tempered safety glass window
- Ample storage under berth
- Reading lights and lamps
- Overhead hatch
- Laminated sole
- Hull and headliners
- Overhead down lights
- One USB socket next to bedding





# INTERIOR SCHEME 1

## SWEDEN





# INTERIOR SCHEME 2

## HONG KONG



# INTERIOR SCHEME 3

## BERMUDA



# ELECTRICAL, MECHANICAL & DECK

---

## INTERIOR, NAVIGATION LIGHTING & DC POWER

- Interior down lights
- Cockpit lights on the flybridge
- Overhead recessed lights in saloon
- One red/white nav station light
- One all round white nav light
- One stern light
- One port light
- One stbd light
- One tank sensor monitor

## POWER SUPPLY

- Four 200AH AGM house batteries
- Four 160AH AGM main engine start batteries

## ENGINE & MACHINERY

- Two Scania 875hp engines with two gearboxes ZF370V with shaft drives
- Electronic throttle control mounted to helm
- Insulation in engine rooms
- Fresh water engine cooling system
- Engine instrument panel at helm position
- Two fuel tanks in total approx. capacity 8000L
- Racor500 fuel filters
- Exhaust waterlocks
- Two fuel level sensors
- Engine room Delta-T ventilation system
- Two deck fillers

## PLUMBING

- Four automatic bilge pumps
- Two manual bilge pump

- Hot and cold pressure water
- Two isotherm water heaters – 75L tanks
- One Universal pressure pump
- Black water tanks tbc.
- Fresh water tanks approx 1500L
- Fresh water level sensor
- Holding tank sensor

## HATCHES

- Lewmar flush deck hatches drained to waterline

## ANCHORING & MOORING

- One electric windlass
- One 40kg anchor, 50m chain, and 50m warp
- Six x 200mm folding cleats

## MISCELLANEOUS DECK HARDWARE

- Stainless steel stanchions
- Dynema life lines
- Two deck water fillers
- Two deck fuel fillers
- Two deck waste pump-out

## RUDDER AND STEERING

- Twin rudders
- Hydraulic steering





MC63<sub>P</sub>  
MULTIHULL

# McCONAGHY

MULTIHULLS

**FOR MORE INFORMATION PLEASE CONTACT:**

Mark Evans

Director

[mevans@mconaghyboats.com](mailto:mevans@mconaghyboats.com)

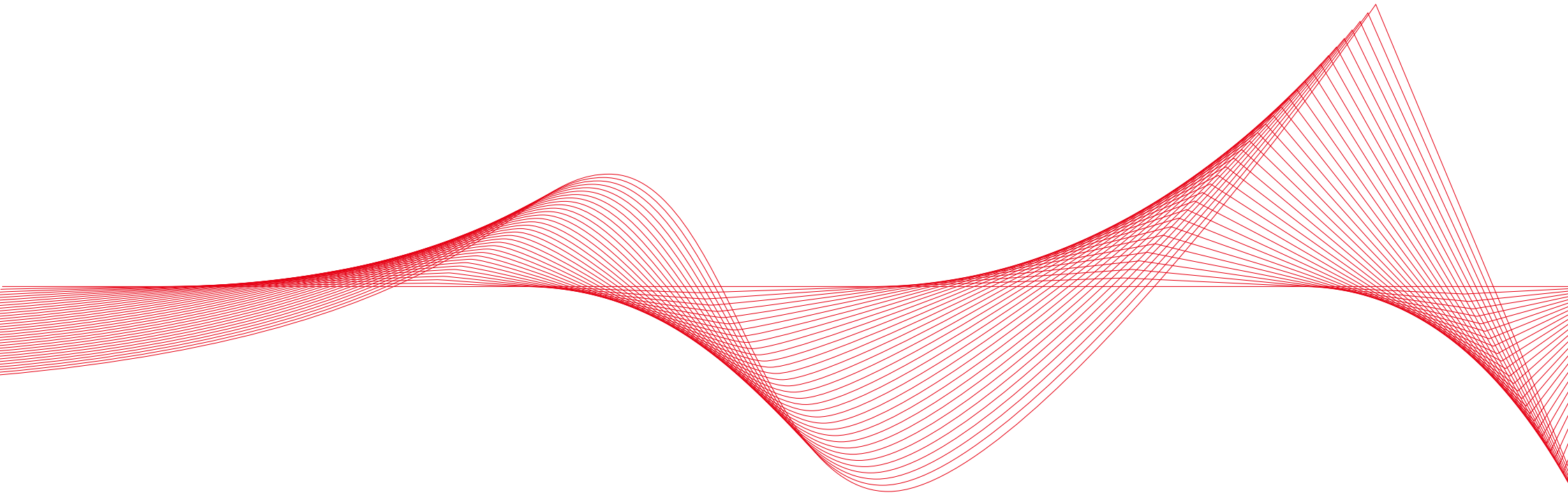
Mobile: +852 5501 6001

[www.mconaghyboats.com](http://www.mconaghyboats.com)

**CONFIDENTIALITY, RESTRICTIONS AND COPYRIGHT**

© McConaghy Boats, This document and all information herein is confidential, commercially sensitive, and the property of McConaghy Yachts. This document is not an offer capable of acceptance, and any final agreement for the build of any yacht will be agreed and then recorded in a formal shipbuilding agreement. We reserve the right to withdraw this document, and or to review this document and update it at our absolute discretion. This document must not be reproduced, copied, loaned or disposed of directly or indirectly, nor used for any purpose other than that for which it is specifically furnished without the prior written consent of McConaghy Yachts.

**McCONAGHY**  
MULTIHULLS



**MC63<sub>P</sub>**  
MULTIHULL